

# BEING A LICENSED HOME CHILDCARE PROVIDER WITH FAMILY SPACE QUINTE INC.



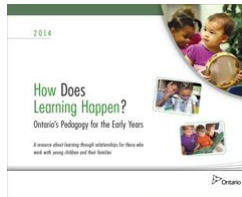
**Myth:** If I look after children in my home, I will feel very isolated.

**Fact:** Not with a licensed agency like Family Space. We have a home visitor, Family Space staff who are here to assist you. We have a network of caregivers who meet monthly to share ideas, concerns, etc, we have a closed Facebook group to share ideas, and you can network with any of our caregivers whenever you need or want to. We have built a community to support you as a caregiver with Family Space.

Want to get more information on becoming a provider with Family Space Quinte Inc.?

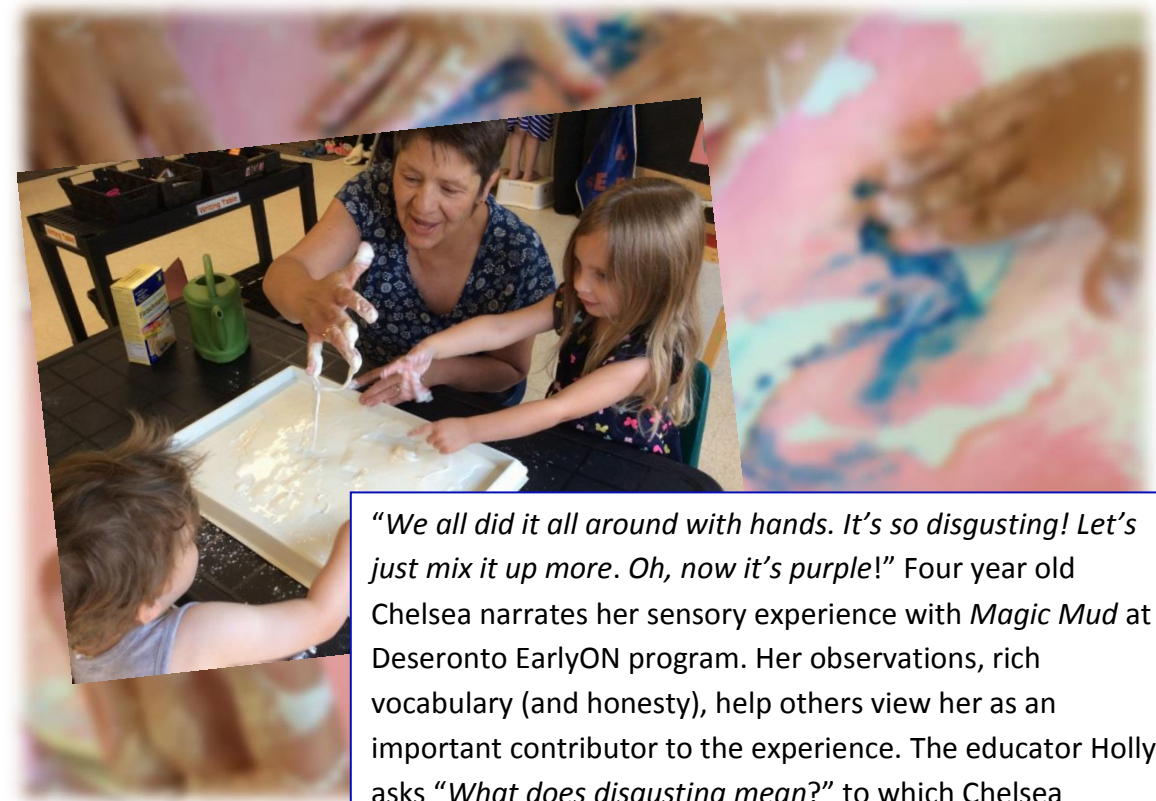


[www.familyspace.ca](http://www.familyspace.ca)  
613-966-9427



## July 2018

**How Does Learning Happen?** Ontario's pedagogy for the early years is organized around the foundations of **belonging, well-being, engagement,** and **expression.** Let's look closely at how our educators support these conditions—important for children to learn, grow and flourish—at early learning playgroups!



*"We all did it all around with hands. It's so disgusting! Let's just mix it up more. Oh, now it's purple!"* Four year old Chelsea narrates her sensory experience with *Magic Mud* at Deseronto EarlyON program. Her observations, rich vocabulary (and honesty), help others view her as an important contributor to the experience. The educator Holly asks *"What does disgusting mean?"* to which Chelsea responds, *"It's something like this!"* Educator's questions and comments help sustain engagement. Holly uses her knowledge of the children's interests to provide the best experiences and outcomes. *"They really love sensory play."*

**DID YOU KNOW?**

**Modelling how to make friends and sustain play provides a positive example of social skills.**

The Family Space Resource Consultant Program offers services to families with children who have special abilities, or require extra support in licenced childcare.



Please call 613-966-9427 or visit our website [www.familyspace.ca](http://www.familyspace.ca) for more information.

DAY	LOCATION	TIME	DATES
<b>MONDAY</b>			
Station Street Playgroup	100 Station Street, Belleville	9:30am - 12:00pm	9,16,23,30
Wildwood Walkers	Quinte Conservation –Potters Creek-2061 Old Hwy #2 ,Belleville	9:30am – 12:00pm	9,16,23,30
<b>TUESDAY</b>			
Baby Club	100 Station Street, Belleville	10:00am - 11:30am	3,10,17,24,31
Infant Feeding Club	100 Station Street, Belleville	11:30am - 12:30pm	3,10,17,24,31
Salvation Army Playgroup	Salvation Army Church 290 Bridge Street West, Belleville	9:30am - 12:00pm	3,10,17,24,31
Frankford Playgroup	Frankford Full Gospel Tabernacle—33 Trent St. S. Frankford	9:30am - 12:00pm	3,10,17,24,31
<b>WEDNESDAY</b>			
Station Street Playgroup	100 Station Street, Belleville	9:30am - 12:00pm	4,11,18,25
Calvary Community Church	679 Dundas Street West, Belleville	9:30am – 12:00pm	4,11,18,25
<b>THURSDAY</b>			
Baby Club	100 Station Street, Belleville	10:00am - 11:30am	5,12,19,26
Eastminster Playgroup	Eastminster United Church 432 Bridge Street East, Belleville	9:30am - 12:00pm	5,12,19,26
<b>FRIDAY</b>			
Station Street Playgroup	100 Station Street, Belleville	9:30am - 12:00pm	6,13,20,27
Wildwood Academy Outdoor Playgroup	Quinte Conservation –Potters Creek-2061 Old Hwy #2 ,Belleville	9:30am - 11:30am	6,13,20,27
<b>SATURDAY</b>			
Wildwood Academy Outdoor Playgroup	Quinte Conservation –Potters Creek-2061 Old Hwy #2 ,Belleville	9:30am - 12:00pm	28
Station Street Playgroup	100 Station Street Belleville	9:30am - 12:00pm	7,14,21

## Wildwood Outdoor Playgroup



**Every Friday & Saturday, July 28**  
**9:30am-12:00pm**  
**Potter's Creek**



The entire family is invited to join us for an outdoor play adventure!

**All Family Space programs and the office will be closed Monday, July 2.**



For more information about our programs please visit [www.familyspace.ca](http://www.familyspace.ca) or call 613-966-9427.